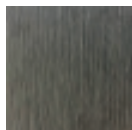
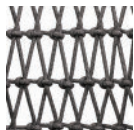


# POINCIANA 2-Seater Left Arm

# RATANA



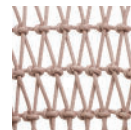
Frame: Aluminum  
Finish: Ash Grey



Frame: Durarope™  
Finish: Lava Grey



Frame: Aluminum  
Finish: Whitewash



Frame: Durarope™  
Finish: Pink

## FN61352LAG-L | FN61352PNK-L



Seat Height\*: 17" w/cushion

Overall Height: 31"



Arm Height: 26"



Depth: 34"



Width: 54"

Weight: 72 LBS



### TECHNICAL INFORMATION

- Weave: Durarope™ – Lava Grey LAG, Pink PNK
- Frame: Aluminum – Ash Grey ASG, Whitewash WHT
- Criss-cross rope weaving with tapered round legs
- Aluminum with powder coating, hand brushed surface and protective top coating
- Ratana Durarope™ is made of Polypropylene (PP) and Polyolefin
- UV and weather resistant knitted Durarope™
- Durarope™ has a Grey Scale result of 4 after 3,000 hours of UV testing
- The maximum tensile strength at each rope is 280 LBF
- Max. weight load: 350 LBS per seat
- Contract quality
- For outdoor use only

Toll Free Phone: 886.919.181  
Toll Free Fax: 888.880.8209  
Email: [sales@ratana.com](mailto:sales@ratana.com)  
Website: [www.ratana.com](http://www.ratana.com)