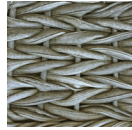


BOSTON 2-Seater Left Arm

RATANA



Frame: Aluminum
Finish: Ash Grey



Frame: Resin
Finish: Smoke Grey

FN51752SMG-L



Seat Height*: 17.5" w/cushion

Overall Height: 36.5"



Arm Height: 25"



Depth: 37.5"



Width: 54"

Weight: 76 LBS



TECHNICAL INFORMATION

DESIGN

Meticulously hand-woven of thick, braided resin in Smoke Grey finish, wrapped tightly over powder-coated aluminum frames, coupled with the deep, high resilient seating durable enough to withstand any harsh weather elements.

FRAME

Highly polished, hand-brushed finishing on sturdy chaises base frame and tapered legs add structural integrity to the piece, enhancing beauty and long-lasting comfort.

For outdoor use only

Toll Free Phone: 886.919.1881
Toll Free Fax: 888.880.8209
Email: sales@ratana.com
Website: www.ratana.com