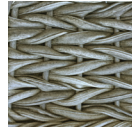


# BOSTON Sofa

# RATANA

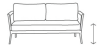


Frame: Aluminum  
Finish: Ash Grey



Frame: Resin  
Finish: Smoke Grey

## FN51703SMG



Seat Height\*: 17.5" w/cushion

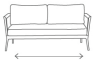
Overall Height: 36.5"



Arm Height: 25"



Depth: 37.5"



Width: 82"

Weight: 107 LBS



## TECHNICAL INFORMATION

### DESIGN

Meticulously hand-woven of thick, braided resin in Smoke Grey finish, wrapped tightly over powder-coated aluminum frames, coupled with the deep, high resilient seating durable enough to withstand any harsh weather elements.

### FRAME

Highly polished, hand-brushed finishing on sturdy chaises base frame and tapered legs add structural integrity to the piece, enhancing beauty and long-lasting comfort.

For outdoor use only

Toll Free Phone: 886.919.1881  
Toll Free Fax: 888.880.8209  
Email: [sales@ratana.com](mailto:sales@ratana.com)  
Website: [www.ratana.com](http://www.ratana.com)