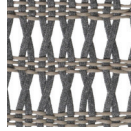


COCONUT GROVE 2-Seater Left Arm

RATANA

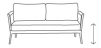


Frame: Aluminum
Finish: Pearl



Weave: Durastrap™ & Durarope™
Finish: Lithium Pearl

FN60152LPR-L



Seat Height*: 17" w/cushion

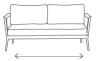
Overall Height: 28.75"



Arm Height: 26"



Depth: 32.5"



Width: 55"

Weight: 70 LBS



TECHNICAL INFORMATION

- Dual colors polyolefin Durarope™ & Durastrap™
- Hand-brushed pearl color on the frame supported by round tapered legs
- Aluminum with powder coating, hand brushed surface and protective top coating
- UV and weather resistant knitted polyolefin Duraropes™
- Polyolefin Durarope™ & Durastrap™ have a Grey Scale result of 4 after 3,000 hours of UV testing
- The maximum tensile strength of each Durarope™ & Durastrap™ is 280 LBF
- Max. weight load: 350 LBS per seat
- Contract quality
- For outdoor use only

Toll Free Phone: 886.919.1881
Toll Free Fax: 888.880.8209
Email: sales@ratana.com
Website: www.ratana.com