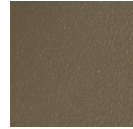


COPACABANA 40" Square Dining Table w/ UH

RATANA



Frame: Aluminum
Finish: Black



Frame: Aluminum
Finish: Brown
(Table Top Only)

FN55036BRN



Depth: 40"



Overall Height: 29.5"



Width: 40"

Weight: 40 LBS



TECHNICAL INFORMATION

DESIGN

The Copacabana collection from Ratana is visually striking, featuring a clean, open, contemporary design and modular configuration. With premium, tailored deep cushioning, this contract-graded collection is extremely durable and weather resistant, offering many seasons of enjoyment.

FRAME

A classic black powder-coated aluminum frame is complemented by a brown braided-polypropylene rope (constructed of sturdy PVC tubing and a fiber core). Copacabana will transform any outdoor space into a luxurious oasis.

For outdoor use only

Toll Free Phone: 886.919.1881
Toll Free Fax: 888.880.8209
Email: sales@ratana.com
Website: www.ratana.com