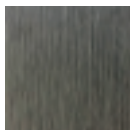


# ELEMENT 5.0 Double Chaise Lounger

# RATANA



Frame: Aluminum  
Finish: Ash Grey



Frame: Aluminum  
Finish: Whitewash

## FN57022SASG | FN57022WHT



Seat Height: 17" w/cushion

Overall Height: 13"



Depth: 80"



Width: 54.5"

Weight: 142 LBS



### TECHNICAL INFORMATION

- Finishes: Ash Grey ASG, Whitewash WHT
- Frame: Aluminum
- Design using bold and defining lines
- All pieces except dining chairs have a bevel frame design
- Aluminum with powder coating, hand brushed surface and protective top coating
- Max weight load: 350 LBS per seat
- Contract quality
- For outdoor use only

Toll Free Phone: 886.919.1881  
Toll Free Fax: 888.880.8209  
Email: [sales@ratana.com](mailto:sales@ratana.com)  
Website: [www.ratana.com](http://www.ratana.com)