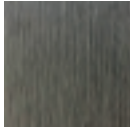
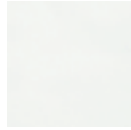


LIMO Counter Table

RATANA



Frame: Aluminum
Finish: Ash Grey



Frame: Aluminum
Finish: Whitewash

FN50042ASG | FN50042WHT



Depth: 30"



Overall Height: 38"



Width: 60"

Weight: 49 LBS



TECHNICAL INFORMATION

DESIGN

Sturdy and solidly built, Limo table collection presents you the dining space that you and your guests will truly enjoy and appreciate. All Limo tables (bar and dining) have a umbrella hole in the middle to cater for your sun shade protection.

FRAME

Featured with restproof extruded aluminum frame, with premium powder coated and hand-brushed scratch resistance finish. Limo is offering in Country Brown, Ash Grey and Taupe finish to suit your outdoor color theme.

For outdoor use only

Toll Free Phone: 886.919.181
Toll Free Fax: 888.880.8209
Email: sales@ratana.com
Website: www.ratana.com