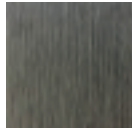
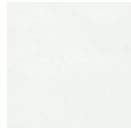


# LIMO Counter Table

# RATANA



Frame: Aluminum  
Finish: Ash Grey



Frame: Aluminum  
Finish: Whitewash

## FN50042ASG | FN50042WHT



Depth: 30"

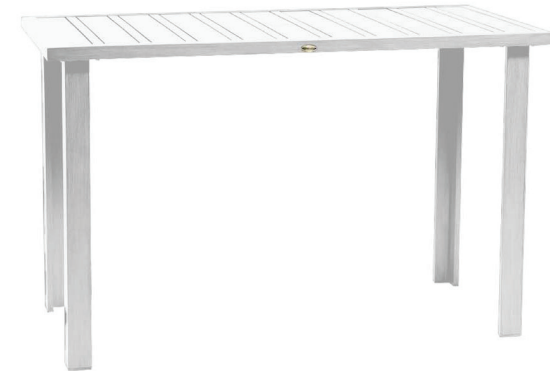


Overall Height: 38"



Width: 60"

Weight: 49 LBS



## TECHNICAL INFORMATION

### DESIGN

Sturdy and solidly built, Limo table collection presents you the dining space that you and your guests will truly enjoy and appreciate. All Limo tables (bar and dining) have a umbrella hole in the middle to cater for your sun shade protection.

### FRAME

Featured with restproof extruded aluminum frame, with premium powder coated and hand-brushed scratch resistance finish. Limo is offering in Country Brown, Ash Grey and Taupe finish to suit your outdoor color theme.

For outdoor use only

Toll Free Phone: 886.919.181  
Toll Free Fax: 888.880.8209  
Email: sales@ratana.com  
Website: www.ratana.com