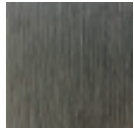
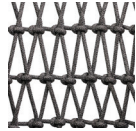


POINCIANA 2-Seater Right Arm

RATANA



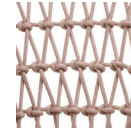
Frame: Aluminum
Finish: Ash Grey



Frame: Durarope™
Finish: Lava Grey

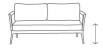


Frame: Aluminum
Finish: Whitewash



Frame: Durarope™
Finish: Pink

FN61352LAG-R | FN61352PNK-R



Seat Height*: 17" w/cushion

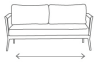
Overall Height: 31"



Arm Height: 26"



Depth: 34"



Width: 54"

Weight: 72 LBS



TECHNICAL INFORMATION

- Weave: Durarope™ – Lava Grey LAG, Pink PNK
- Frame: Aluminum – Ash Grey ASG, Whitewash WHT
- Criss-cross rope weaving with tapered round legs
- Aluminum with powder coating, hand brushed surface and protective top coating
- Ratana Durarope™ is made of Polypropylene (PP) and Polyolefin
- UV and weather resistant knitted Durarope™
- Durarope™ has a Grey Scale result of 4 after 3,000 hours of UV testing
- The maximum tensile strength at each rope is 280 LBF
- Max. weight load: 350 LBS per seat
- Contract quality
- For outdoor use only

Toll Free Phone: 886.919.1881
Toll Free Fax: 888.880.8209
Email: sales@ratana.com
Website: www.ratana.com