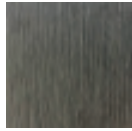
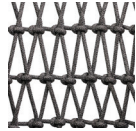


# POINCIANA Chair w/o Arm

# RATANA



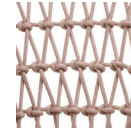
Frame: Aluminum  
Finish: Ash Grey



Frame: Durarope™  
Finish: Lava Grey



Frame: Aluminum  
Finish: Whitewash



Frame: Durarope™  
Finish: Pink

## FN61353LAG-C | FN61353PNK-C



Seat Height\*: 17" w/cushion



Overall Height: 31"



Depth: 34"



Width: 26"

Weight: 42 LBS



### TECHNICAL INFORMATION

- Weave: Durarope™ – Lava Grey LAG, Pink PNK
- Frame: Aluminum – Ash Grey ASG, Whitewash WHT
- Criss-cross rope weaving with tapered round legs
- Aluminum with powder coating, hand brushed surface and protective top coating
- Ratana Durarope™ is made of Polypropylene (PP) and Polyolefin
- UV and weather resistant knitted Durarope™
- Durarope™ has a Grey Scale result of 4 after 3,000 hours of UV testing
- The maximum tensile strength at each rope is 280 LBF
- Max. weight load: 350 LBS per seat
- Contract quality
- For outdoor use only

Toll Free Phone: 886.919.1881  
Toll Free Fax: 888.880.8209  
Email: sales@ratana.com  
Website: www.ratana.com