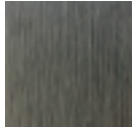


POINCIANA Coffee Table

RATANA



Frame: Aluminum
Finish: Ash Grey



Frame: Aluminum
Finish: Whitewash

FN61304ASG | FN61304WHT



Depth: 23"



Overall Height: 16"



Width: 47"

Weight: 22 LBS



TECHNICAL INFORMATION

- Frame: Aluminum - Ash Grey ASG, Whitewash WHT
- Aluminum with powder coating, hand brushed surface and protective top coating
- Contract quality
- For outdoor use only

Toll Free Phone: 886.919.181
Toll Free Fax: 888.880.8209
Email: sales@ratana.com
Website: www.ratana.com