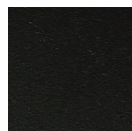
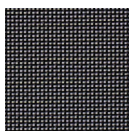


# TOSCANA Lounger (Stackable)

# RATANA



Frame: Aluminum  
Finish: Graphite



Frame: Batyline®  
Finish: Black



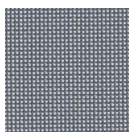
Frame: Aluminum  
Finish: White



Frame: Batyline®  
Finish: White



Frame: Aluminum  
Finish: Grey



Frame: Batyline®  
Finish: Grey

**FN63020BLK | FN63020GRY | FN63020WHT**



Seat Height\*: 13.5"

Overall Height: 13.5"



Depth: 81.5"



Width: 28.5"

Weight: 37 LBS



## TECHNICAL INFORMATION

- Frame: Aluminum
- TIGER Drylac® (49 Series) powder coated aluminum frame
- Serge Ferrari Batyline® Sling – high tenacity, extremely durable
- Adjustable back with 5 adjustment levels
- Lounger is compactly stackable, 8pcs per stack
- Concealed hardware
- #316 stainless steel screws

- Heavy duty glides (nylon)
- The space between the sling seat/ back and the base increase to 1", safety improvement and easy to flip up the back support panel
- Lounger passed the BIFMA X5.1 Test (factory in-house Lab)
- Max. weight load: 400 LBS
- Contract quality
- For outdoor use only

Toll Free Phone: 886.919.1881  
Toll Free Fax: 888.880.8209  
Email: [sales@ratana.com](mailto:sales@ratana.com)  
Website: [www.ratana.com](http://www.ratana.com)