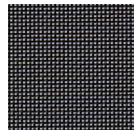


BAHAMAS Adjustable Lounger

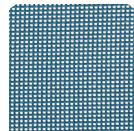
RATANA



Frame: Aluminum
Finish: Graphite



Frame: Batyline®
Finish: Black



Frame: Batyline®
Finish: Peacock



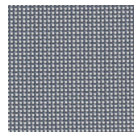
Frame: Aluminum
Finish: White



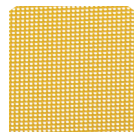
Frame: Batyline®
Finish: White



Frame: Aluminum
Finish: Grey



Frame: Batyline®
Finish: Grey



Frame: Batyline®
Finish: Solar

**FN64520BLK | FN64520PEA | FN64520GRY |
FN64520SOL | FN64520WHT**



Seat Height*: 14"

Overall Height: 14"



Depth: 87.5"



Width: 28.5"

Weight: 34 LBS



TECHNICAL INFORMATION

- Frame: Aluminum
- TIGER Drylac® (49 Series) powder coated aluminum frame
- Serge Ferrari Batyline® Sling – high tenacity, extremely durable
- Adjustable back with 5 adjustment levels
- Lounger is compactly stackable, 8pcs per stack
- Concealed hardware
- #316 stainless steel screws

- Heavy duty glides (nylon)
- Wheels (nylon) on back legs for easy relocation
- Lounger passed the BIFMA X5.1 Test (factory in-house Lab)
- Max. weight load: 400 LBS
- Contract quality
- For outdoor use only

Toll Free Phone: 886.919.1881
Toll Free Fax: 888.880.8209
Email: sales@ratana.com
Website: www.ratana.com